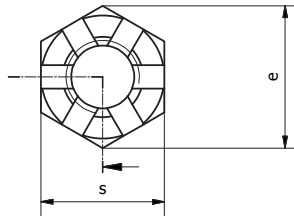
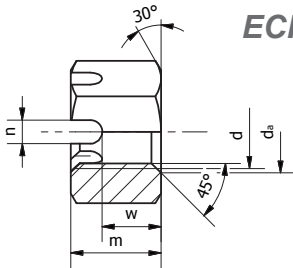


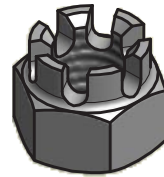
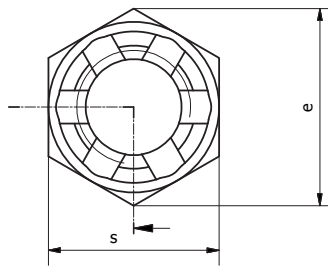
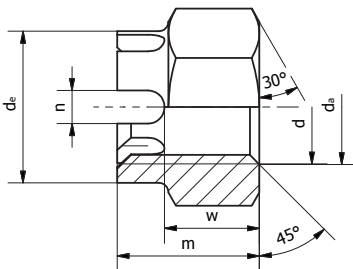
- ✓ DIN 935
- ✓ ISO 7035
- ⊙ UNI 5593

DEI

DADI EDAGONALI AD INTAGLI HEXAGON CASTLE NUTS SECHSKANT - KRONENMUTTERN ECROUS CRENELES



Geometria e dimensioni dado per misure da M4 a M10



Geometria e dimensioni dado per misure da M12 in su

Dimensions in mm

Filetto M.	M3	M4	M5	M6	M8	M10	M10	M12	M12	M20
passo fine					1	1		1,5		
passo grosso		0,7	0,8	1			1,25		1,25	
da min		4	5	6	8	10	10	12	12	
de max		-	-	-	-	-	-	16	18	
dw		5,9	6,9	8,9	11,6	14,6	14,6	16,6	16,6	
e min		7,66	8,79	11,05	14,38	17,77	17,77	20,03	20,03	
s nom		7	8	10	13	16	16	18	18	
m max		5	6	7,5	9,5	12	12	15	15	
n min		1,2	1,4	2	2,5	2,8	2,8	3,5	3,5	
w max		3,2	4	5	6,5	8	8	10	10	

CODE EXAMPLE:

237 + material + thread + pitch + color

DEI M6 Al7075 white = 2371060B

DEI M8 Ti GR5 blue = 2375080K

